



Department of
Environmental
Conservation

Division of Operations

Bureau of Recreation

Alger Island Public Campground & Fourth Lake Day Use Area

Proposed Final Unit Management Plan

Town of Webb, Herkimer County, New York

May, 2015

New York State Department of Environmental Conservation
Division of Operation 3rd Floor
625 Broadway, Albany, NY12233

Governor **ANDREW M. CUOMO**

Commissioner **JOSEPH J. MARTENS**

**ALGER ISLAND PUBLIC CAMPGROUND
AND FOURTH LAKE DAY USE AREA
SITE SPECIFIC - VOLUME II
PROPOSED FINAL UNIT MANAGEMENT PLAN**

NOTE: All campground unit management plans have three parts. Volume I is a generic plan and contains overview, environmental setting, goals, policy, management, and impact assessment criteria which pertain universally and in common to all 44 Adirondack and 8 Catskill Public Campgrounds and Special Day-Use classified Intensive Use Areas. Volume II is a site specific document containing inventories of physical, biological, and manmade features together with specific management objectives for the individual site. Volume III contains support data in the form of Appendix to Volumes I and II.

Unit Management Plans are prepared by the New York State Department of Environmental Conservation to cover the next five (5) year management period. Guidelines and criteria for the development of this unit management plan and management of this day-use facility and adjacent wild forest lands are based on the Adirondack Park State Land Master Plan (APSLMP).

For information, contact Michael Buzzelli, Campground Program Manager, New York State Department of Environmental Conservation, 625 Broadway, Albany, NY12233, telephone 518-457-2500.

SUMMARY
PROPOSED FINAL UNIT MANAGEMENT PLAN
**ALGER ISLAND PUBLIC CAMPGROUND/
FOURTH LAKE DAY USE AREA**

In keeping with criteria referenced in the APSLMP, the Generic Unit Management Plan and Environmental Impact Statement for Campgrounds and Day Use Areas (GUMP/EIS) and Department of Environmental Conservation Management Policy for state-owned lands, this five year management plan has been prepared for the Alger Island Public Campground and Fourth Lake Day Use Area. The management goals include protection of the natural resource base in accordance with applicable law, offer recreational opportunities for public enjoyment of the forest preserve, ensure that revenues equal operating costs for that portion of the program covered by user fees, and manage the program to enhance economic benefits to local communities and the state.

The Department's management of Alger Island Campground and the Fourth Lake Day Use Area will be in conformance with the APSLMP. In addition, the actions proposed in this UMP will be carried out in conformance with the conditions and thresholds established for such actions in the GUMP/EIS, and do not require any separate site specific environmental review (see 6 NYCRR 617.10[d]).

Any action taken by the Department on this unit that is not addressed in this Unit Management Plan and is not addressed in the GUMP/EIS may need a separate site specific environmental review.

The following management actions are proposed over the next five years for Alger Island Public Campground in order to help meet these goals: A. Replace 2 visitor docks at Fourth Lake Day Use Area; B. Upgrade access road and parking lot at Fourth Lake Day Use Area; C. Correct land classification error for Fourth Lake Day Use Area; D. Repair 500' wood and stone cribbing on Alger Island; E. Address waste management on Alger Island; F. Repair two docks on the east end of Alger Island; G. Make campsite improvements on Alger Island; and H. Address Alger Island Caretaker's & Assistant's Cabins future use.

Beneficial effects of these proposed actions include: protection of the Forest Preserve; compliance with state health codes; maintenance of physical plant investment; modernization of facilities to enhance a satisfactory recreational experience by users and allow accessibility under ADA; upkeep of facilities to

contribute to public health and safety and environmental compliance; and provide conditions in a setting and scale that is in harmony with the character of the Adirondack Park.

The following mitigation measures will be adopted in the implementation phase of this plan in order to minimize environmental impacts. All construction projects will minimize tree removal in order to minimize clearing and maintain the wooded appearance of the facility. Architectural designs will be selected to achieve a harmonious blending with the character of the recreation area and surrounding forest. Construction sites will be seeded and mulched to readily reestablish vegetation and stabilize the soil. Adjacent forest cover will not be altered. The proposals in this plan are intended to improve and update existing facilities to accommodate present peak use levels.

Various alternative actions to those favored and selected, such as full campground build out, campground abandonment and no-action, were considered. Public opposition, adverse effect on local communities, and uncontrolled use of state lands would sharply increase, should recreation planning and management efforts be reduced or dissolved. The care, custody, and control precedent preclude selection of these alternatives at this time. In addition, Executive Law §816 requires the Department of Environmental Conservation to develop, in consultation with the APA, individual unit management plans (UMPs) for each unit under its jurisdiction classified in the APSLMP.

Table of Contents

I. INTRODUCTION.....	6
A. Overview	6
B. Area Description.....	6
1. Location	6
2. History	7
II. INVENTORY OF FACILITIES, SYSTEMS AND RESOURCES.	9
A. Manmade Facilities	9
1. Campground and Day Use Area Facilities.....	9
2. Parking Facilities	9
3. Fishing and Waterway Access Site.....	9
4. Roads	10
5. Bridges.....	10
6. Trails	10
7. Boats	10
8. SPDES Permit.....	10
9. Buildings.....	10
10. Refuse System	11
11. Water System.....	11
12. Electrical System	12
13. Sewage System	12
14. Telephone	12
15. Signs	12
16. Shore Protection.....	12
B. Inventory of Systems	13
1. Staff.....	13
2. Fee Schedule 2014.....	13
3. Permits	13
4. Off Season Use	13
C. Inventory of Natural Resources.....	14
1. Physical.....	14
2. Biological.....	14
III. INVENTORY OF ISSUES AND CONSTRAINTS	19

A. Article XIV, New York State Constitution	19
B. Adirondack State Land Master Plan.....	19
C. Environmental Conservation Laws	19
D. Recreation Program Goals	19
E. Public Use.....	20
1. Inventory of Public Use	20
2. Carrying Capacity	21
F. Adjacent Lands	24
G. Invasive Species	24
H. ADA Accessibility Guidelines	25
I. Unique Ecosystems.....	25
J. General Operation.....	25
IV. PROPOSED MANAGEMENT ACTIONS	26
A. Replace 2 visitor docks at Fourth Lake DUA	27
B. Upgrade access road and parking lot at Fourth Lake DUA.....	27
C. Correct land classification error for Fourth Lake DUA.....	27
D. Repair wood cribbing on Alger Island	27
E. Address waste management on Alger Island.....	28
F. Repair 2 docks on east end of Alger Island	29
G. Campsite improvements on Alger Island	29
H. Alger Island Caretaker’s & Assistant’s Cabins future use	30
V. EXHIBIT INDEX.....	30

I. INTRODUCTION

A. Overview

Alger Island Campground and Fourth Lake Day Use Area (DUA) are State-owned, Department of Environmental Conservation (DEC) operated public facilities situated on Fourth Lake of the Fulton Chain of Lakes. This lake chain is created by a dam at Old Forge which is under the jurisdiction of the Hudson River-Black River Regulating District. The dam controls the level of the first five of the eight lakes in the Fulton Chain of Lakes.

The campsites on Alger Island are only accessible by water. Parking and boat launching access (car top boats only) are gained from the adjacent Department-owned Fishing and Waterway Access Site at the Fourth Lake DUA at the foot of the lake, or from private boat launches at Old Forge and the DEC operated Boat Launch Site at Inlet. Shopping and sight-seeing attractions are located a short drive away in the nearby hamlets of Old Forge and Inlet.

The efficient operation and management of Alger Island Public Campground and Fourth Lake DUA strongly depend upon continuous maintenance of both facilities. Continuous maintenance includes: building maintenance (foundations, siding, roofing, and interior); campsite maintenance (grading, vegetation, fireplace, and lean-to); shoreline protection; and potable water system improvement.

Guidelines for the management of Alger Island Public Campground and Fourth Lake DUA are based on the facilities classification as Intensive Use Areas in the APSLMP. An issue with the classification of Fourth Lake DUA will be addressed in this plan.

B. Area Description

1. Location

Alger Island Campground (45ac.) and Fourth Lake DUA (10.5 ac) are located within DEC Region 6 Herkimer Sub-Office working circle, on the Fourth Lake of the Fulton Chain of Lakes, approximately 5 miles northeast of the Hamlet of Old Forge. The facilities are located in the Town of Webb, Herkimer County, Lots 1 and 2 of the Fourth Lake Allotment of Township 8 of the John Brown Tract.

2. History

In 1792, John Brown of Providence, Rhode Island and Revolutionary War fame purchased about 200,000 acres in the northern part of New York State from Alexander Macomb's vast holdings. He later divided this purchase into eight townships which he designated as follows: Township No. 1, Industry; No. 2, Enterprise; No. 3, Perseverance; No. 4, Unanimity; No. 5, Frugality; No. 6, Sobriety; No. 7, Economy, and No.8, Regularity. The campground and day-use area lie in Township No. 8.

Early access to this area from "civilization" was via the Brown's Tract Road and subsequently, the Adirondack Division of the New York Central Railroad (later part of Penn Central, now owned by the New York State Department of Transportation.) This line began operation on July 1, 1892 and is presently inactive.

Fourth Lake DUA is located on the fourth of eight lakes in the Fulton Chain. This lake chain is created by a dam at Old Forge which is under the jurisdiction of the Hudson River-Black River Regulating District. This dam controls the level of the first five lakes of the Fulton Chain. In 1811, an "Act for the Improvement of the Internal Navigation of the State for the purpose of establishing a communication by means of Canal Navigation between the Great Lakes and the Hudson River" was passed by the New York State Legislature. Steamboat inventor Robert Fulton was an enthusiastic member of the commission assigned to investigate the feasibility of an "Adirondack Canal" and he extolled the virtues of this unnamed chain of Adirondack lakes. Although the idea never attained fruition, the lakes have since been known as the Fulton Chain.

In his book "The Adirondacks (Fulton Chain - Big Moose Region)", Joseph F. Grady indicates that Alger Island was called Deer Island back in John Brown's day (late 1700's). The fact that (because of its comparatively large size) it was subsequently called Big Island is confirmed by the U.S.G.S. map of the Old Forge area. The name Alger's Island came from the family name of its long time owners, father and son, Mort and Ollie Alger.

Alger Island was purchased by the state of New York on January 16, 1950 from Charles J. Engel. Lean-tos were constructed during the 1960's with the last one finished in 1968.

The property managed as the Fourth Lake DUA was purchased by the state of New York on March 1, 1961 from the Herkimer County Young Men's Christian Association. The deed is found at the

I. INTRODUCTION

Herkimer County Clerk's Office in Book 549, Pg. 500. The acquisition is shown on survey map number 1474 by James Dexter.

II. INVENTORY OF FACILITIES, SYSTEMS AND RESOURCES.

A. Manmade Facilities

CAMPGROUND & DAY USE PICNIC AREA FACILITIES INVENTORY

<u>ALGER ISLAND CAMPGROUND</u>	<u>ALGER ISLAND PICNIC AREA*</u>	<u>FOURTH LAKE DUA*</u>
<ul style="list-style-type: none"> • 17 Campsites • Design Capacity: 102 (17 x 6 persons/site) • 15 Lean-tos • 2 Tent Sites • 17 Picnic Tables • 17 Fireplaces 	<ul style="list-style-type: none"> • 6 Picnic Tables • Design Capacity: 36 (6 x 6 persons/table) • 3 Fireplaces • 6 Grills • 6 Hand pumps • 1 Horseshoe Pit • 3 Visitor's Docks (2) - 8' x 12' (1) - 10' x 2' 	<ul style="list-style-type: none"> • 17 Picnic Tables • Design Capacity: 102 (17 x 6 persons/table) • 3 Fireplaces • 9 Grills • 2 Water Spigots • 2 Visitor's Docks (2) - 8' x 12'

*Day-Use Picnic Areas are located at South End of Island, East Side of Island, and Fourth Lake DUA.

1. Campground and Day Use Area Facilities

2. Parking Facilities

Fourth Lake DUA:

- 75' x 150', 11,250 sq. ft., gravel, 25 car capacity

3. Fishing and Waterway Access Site

Fourth Lake DUA:

- Dock(1), 10' x 20'.

II. INVENTORY OF FACILITIES, SYSTEMS AND RESOURCES.

- The Fourth Lake DUA component of the Alger Island Campground includes a hand carry "car top" boat launch.
- A small floating dock is provided and parking for 25 cars is available. Trailered boat launching opportunity is not provided.

4. Roads

Fourth Lake DUA:

- Access Road--gravel, 0.2 mile, 14' wide, includes circular drive to parking area
- Water Access Walkways --gravel

5. Bridges

Alger Island:

- Foot Bridge--Wooden, between sites 2 and 3, 25'X3'
- 12'X3'
- 10'X3'.

6. Trails

Alger Island:

- Foot Trail --Shoreline Trail, 1.2 miles

7. Boats

Two 14' MicroCraft Barge w/ 30 hp. outboard motors

8. SPDES Permit

Facility has flow of less than 1,000 gallons per day. No permit required.

9. Buildings

BUILDING	OGS#	LOCATION	DESCRIPTION	CONDITION
Alger Island Supervisor's Cabin	59-005	South tip of island, north of boat dock	Frame construction, propane lighting, wood heat, 27' x 16', 432 sq ft	Built 1963 Fair
Assistants Cabin	59-002	SW of campsite 15	Log construction, 12' x 16', 192 sq ft	Built 1936 Poor
Boat House	59-003	East of boat dock	20' x 14', 280 sq ft	Built 1946 Fair

BUILDING	OGS#	LOCATION	DESCRIPTION	CONDITION
Storage Building	59-004	South of supervisors cabin	Frame construction, 10' x 12', 120 sq ft	Built 1946 Fair
Fourth Lake DUA Supervisor's Cabin	52-001	NE of ticket booth	1 story frame construction, electric heat, 22' x 24', 528 sq ft	Built 1964 Good
Garage	52-002	Next to cabin	1 story wood frame, 22' x 24', 528 sq ft	Built 1964 Good
Ticket Booth	52-003	Entrance of Loop	1 story wood frame, 7.5' x 10', 75 sq ft	Built 1964 Good
Pump House	52-004	North side of parking area	1 story wood frame, 12' x 16', 192 sq ft	Built 1964 Good
Comfort Station	52-005	South side of parking area	1 story wood frame, 17' x 19' 323 sq ft, 8 unit flush	Built 1964 Fair
Lean-to (15)		Alger Island	Wood frame	Varying

10. Refuse System

Carry In, Carry out rules

11. Water System

Alger Island (Non-Potable):

- Dug Wells (6) – Randomly located throughout campground (Non- Potable)
- Hand Pumps (8) – Located at wells and Supervisors Cabin (Non- Potable)

Fourth Lake DUA:

- Drilled Well (1)
- Water Storage Tank (1) 500 gallon steel tank.

- Well is located near Pump House, pumped by a 24 gallon/ minute turbine pump, into a 500 gallon pressure tank which supplies the 8 unit comfort station, supervisor’s cabin and two drinking spigots.

12. Electrical System

Electric is supplied by National Grid. 2014 supply at Fourth Lake DUA totaled \$1033.90. There is no electricity supply to Alger Island.

13. Sewage System

Alger Island:

- Pit Privies (21) are located at each campsite and at picnic areas. They are moved seasonally or as needed.

Fourth Lake DUA:

Location	Septic Tank	Dry Well	Leach Field
Supervisor cabin	500 gallon	500 gallon	1
Comfort Station	750 gallon(2)	1,000 gallon	1

14. Telephone

Alger Island:

- There is a buried phone cable to supervisor’s cabin. There is DSL service for transmitting reservation information.

Fourth Lake DUA:

- Frontier Phone Service: (315) 369-3224. There is DSL service for transmitting reservation information.

15. Signs

A variety of signs are located throughout the facilities to assist visitors in locating the facilities and inform them of messages pertaining to rules, regulations and safety.

16. Shore Protection

There are timber and stone crib structures along the shore of Fourth Lake DUA and around Alger Island to limit shoreline erosion from wave action and fluctuating lake levels

B. Inventory of Systems

1. Staff

Total	Position Title
1	Conservation Recreation Facilities Supervisor I
1	Park and Recreation Aide

2. Fee Schedule 2014

Daily Fees	
Camping – NYS Resident per night	\$18.00
Camping – Non NYS Residents per night	\$23.00
Day Use - Auto	\$6.00
Day Use - Walk-In	\$2.00
Day Use - Bus	\$35.00
Day Use - Motorcycle	\$3.00
Ice – per bag	\$2.00

3. Permits

No temporary revocable permits (TRPs) were issued for either facility in recent years. There were no special events scheduled at either facility in 2014.

4. Off Season Use

Outside of the operating season, there are no barriers preventing access to either facility. No records are kept of off-season use at these facilities but it is recognized that there is public use at both sites. Law enforcement will periodically check these sites.

C. Inventory of Natural Resources

1. Physical

a. Water

The Fulton Chain comprises a portion of the Black River -St. Lawrence River Drainage Basin. The area's water enters this system as part of the Moose River, primarily via the North Branch of the Moose River and the Fulton Chain of Lakes. Fourth Lake is 2,137 acres, 1,707' above sea level and has a maximum depth of 85 feet.

b. Wetlands

Wetlands are inventoried, mapped, and protected under Article 24 of the Environmental Conservation Law, by the Department of Environmental Conservation and the Adirondack Park Agency. There are no wetlands within the boundaries of Alger Island Campground or Fourth Lake DUA.

2. Biological

a. Forest Types

The vegetation on Alger Island and at the Fourth Lake DUA is a typical northern hardwood-hemlock type with associated White Pine, Balsam Fir, and Red Spruce. The southern-most tip of the island in the vicinity of the Caretaker's Cabin exhibits a number of impressive, large diameter White Pines which are of the highest aesthetic value in such a rustic, recreational setting. Understory vegetation includes Striped Maple, Shadbush, Witchhopper, and Blueberry. Protected plants found on this site are Lady Slipper, Club Mosses, Pipsissewa, Various Ferns, and Trillium. The bay area and other wet places harbor such species as Leatherleaf, Labrador Tea, and the carnivorous Sundew as well as aquatic plants such as Pickerel Weed, Wild Calla, Arrowhead, Spadderdock, and Water Lilies.

Hazard tree identification and removal have been conducted from the time that both facilities initially opened. Structurally unsound trees which are in close proximity to campsites, picnic tables parking areas, trails, power lines and buildings threaten public safety. Inspections are routinely conducted to identify such trees and they are subsequently felled.

Periodic removal of hazard trees has not changed the wild forest character of the campground. This is because of the dynamic nature of the forest ecosystem which tends to quickly fill voids in the

crown canopy and because very few trees are removed relative to the overall population. Consequently, the site remains heavily forested in spite of the routine removal of hazard trees.

However, if additional vegetation is needed for site screening, soil stabilization, wildlife habitat or hazard tree replacement native species will be used. In addition, native species that exhibit invasive qualities will not be utilized in order to limit future management and user issues.

b. Wildlife

Following is an inventory of wildlife that occurs within the area adjacent to the Alger Island Public Campground and Fourth Lake DUA either as resident or transient species:

Common Wildlife	
Black Bear	<i>Ursus americanus</i>
White-tailed Deer	<i>Odocoileus virginianus</i>
Coyote	<i>Canis latrans</i>
Raccoon	<i>Procyon lotor</i>
Fisher	<i>Martes pennanti</i>
Otter	<i>Lutra canadensis</i>
Beaver	<i>Castor canadensis</i>
Mink	<i>Mustela vison</i>
Varying Hare	<i>Lepus americanus</i>
Red Squirrel	<i>Tamiasciurus hudsonicus</i>
E. Chipmunk	<i>Tamias striatus</i>

Less Common Wildlife	
Marten	<i>Martes Americana</i>
Bobcat	<i>Lynx rufus</i>
Red Fox	<i>Vulpes vulpes</i>
Gray Fox	<i>Urocyon cinereoargenteus</i>
Muskrat	<i>Ondatra zaibethicus</i>
Porcupine	<i>Erethizon dorsatum</i>
Gray Squirrel	<i>Sciurus carolinensis</i>
Common Loon	<i>Gavia immer</i>

Pursuant to Environmental Conservation Law 11-0907(5)(e), all hunting of big game is prohibited around the Fulton Chain of Lakes. Closed areas contribute to high populations of White-Tailed deer which may be desirable by those who wish to view wildlife, however, it is detrimental to plant and tree regeneration.

Original Deer Management Units (DMU's) were established by the Bureau of Wildlife in 1960. These original zones have been modified and revised to the current classification and are now known as

Wildlife Management Units (WMU's). WMU zone boundaries are patterned after ecological zones and eventually will lead to more finely tuned management that is more specific to given areas. The campground and day use area are included in WMU 5H. Fur bearer Management Units (FMU's) that were established in 1980 were also replaced by Wildlife Management Units (WMU's) in 1985. Further refinement of WMU boundaries occurred in 1998.

c. Fisheries

Fourth Lake is part of the Adirondack’s Fulton Chain of Lakes and the Black River watershed. It is relatively large (2140 acres) and considered an oligotrophic (nutrient poor) cold water lake, which means it is best suited for cold water fish species such as lake trout. The lake's oxygen and temperature profiles are excellent and its water quality in general, is considered very good especially relative to acidification, a serious problem in many Adirondack waters. Despite acidic deposition influence, Fourth Lake's pH remains in the 6.0 to 7.0 range, which is very satisfactory. On the negative side, elevated levels of DDT (an insecticide banned in New York State since 1970) have been detected in the lake ecosystem. They have been the focus of concern and an investigation since 1982 when this pesticide was found in the lake's bottom sediment. It was also detected in lake trout at levels high enough to trigger the implementation of a Health Advisory against eating any lake trout from Fourth Lake. In addition, DDT has been implicated as a cause in the decline of the lake’s native Lake Trout stocks over the 40 years. The source of Fourth Lake’s DDT remains uncertain as its investigation continues.

Fourth Lake Fish Species
Lake Trout
Rainbow Trout
Atlantic Salmon
Largemouth Bass
Smallmouth Bass
Northern Pike
Yellow Perch
Pumpkinseed
Bluegill
Rock Bass
White Sucker
Fallfish
Golden Shiner
Spottail Shiner
Bluntnose Minnow
Rainbow Smelt
Brown Bullhead
Black Crappie

Another lake trout related problem that has been noted for Fourth Lake is fluctuating water levels. Seasonal (winter) draw-downs of the lower Fulton Chain for flood storage are believed to inhibit lake trout recruitment by de-watering spawning shoals. Drawdowns of three to ten feet usually commences shortly after Labor Day, and affects the level of Fourth Lake from October 1 thru March 1.

Despite declines in native Lake Trout stocks, Fourth Lake is still considered a quality sport fishery. Many of the anglers who fish on Fourth Lake access it through the Fourth Lake DUA or Alger Island. The lake is managed as a Two-Story Lake which means it simultaneously supports fishable populations of both cold water and warm water fish species. At present it is stocked annually with lake trout, to supplement the wild population, Rainbow Trout and land-locked Salmon to maintain its cold water fishery. In 2012 the lake was surveyed and 18 species were identified. The lake supports populations of both Smallmouth Bass and Northern Pike, which are popular warm water sport fish species. In addition to sport fish, Brown Bullhead, White Sucker, Yellow Perch, and Golden Shiner are all considered to be abundant in Fourth Lake. Records show that the Endangered Round Whitefish has been documented in the Fulton Chain of Lakes and could be present in waters surrounding the campground and day use area.

d. Soils

Geologists explain that the Adirondacks were formed approximately 1.1 billion years ago during the Precambrian period. Dynamic geological processes including submergence beneath the sea, sedimentation, and pre-existing rocks, deep erosion, and re-submergence were all involved in forming the Adirondacks.

During the ice age, approximately one-half million years ago, the moving ice mass ground and scoured the bedrock, eventually shaping the mountains and forming U-shaped grooves or valleys in between. As the ice retreated approximately 9000 years ago, it left behind an irregular cover of rock rubble. Sand and stone settled out and formed natural dams as the ice receded and melt water filled the newly formed lakes and ponds. Since this structuring of the Adirondacks, vegetation has gradually reclaimed the land and has evolved into the present forests while contributing to the humus components of modern soils. The glacial ice deposited a heterogeneous mixture of stone, gravel, sand, silt, and clay which is called glacial till. Common minerals include quartz, feldspar, mica, and hornblende. Soil

II. INVENTORY OF FACILITIES, SYSTEMS AND RESOURCES.

associations in the area include the very stony Becket and Potsdam classifications as the main soil series. The terrain at Fourth Lake DUA is very bouldered and sloping with the exception of the open area where the facility is located.

III. INVENTORY OF ISSUES AND CONSTRAINTS

A. Article XIV, New York State Constitution

Article XIV of the State Constitution provides in part that “The lands of the state, now owned or hereafter acquired, constituting the Forest Preserve as now fixed by law, shall be forever kept as wild forest lands. They shall not be leased, sold or exchanged, or taken by any corporation, public or private, nor shall the timber thereon be sold, removed, or destroyed”.

B. Adirondack State Land Master Plan

The APSLMP requires that all campgrounds and day use areas will be of a rustic nature. Natural materials will be used to the fullest extent possible in the construction so as to blend with the Adirondack environment. These constraints are further described in Volume I of the generic plan.

C. Environmental Conservation Laws

The management plan has been developed within the constraints set forth by the Environmental Conservation Law (ECL), Rules and Regulations of the State of New York, and established Policies and Procedures for the administration of the lands involved.

D. Recreation Program Goals

- Manage recreation programs in a manner which ensures protection of the natural resources base in accordance with the Environmental Conservation Law, Article XIV of the New York State Constitution, GUMP/EIS and APSLMP.
- Offer recreational opportunities for leisure time enjoyment for the people of the state.
- Ensure that revenues equal operating costs for that portion of the program covered by user fees.
- Manage the program to enhance economic benefits to local communities and the state.

E. Public Use

1. Inventory of Public Use

a. Attendance Trends

Attendance numbers are a combination of camper days (the number of campers X the number of nights spent) and day use (the number of people using the boat launch, day use areas or visiting campers) but not staying overnight. The 5 year trend in camping attendance indicates slight variations from season to season which may be mostly attributed to weather conditions. The average occupancy on the campsites was 55% which is above average for DEC operated campgrounds. Day use attendance is also fairly steady and generally will be affected more by weather than will be camping. Day use attendance is down about 50% from averages 15 years ago which is consistent with a trend throughout DEC operated facilities.

Alger Island Attendance			
Year	Camping	Day Use	Total
2014	3,245	202	3,447
2013	3,418	159	3,577
2012	3,462	250	3,712
2011	3,323	195	3,518
2010	3,787	481	4,268
<i>Average</i>	<i>3,447</i>	<i>257</i>	<i>3,704</i>

Fourth Lake DUA Attendance			
Year	Paid	No Fee	Total
2014	332	94	426
2013	343	105	448
2012	424	65	489
2011	472	82	554
2010	439	85	524
<i>Average</i>	<i>402</i>	<i>86</i>	<i>488</i>

b. Revenue Trends

Camping Revenue is derived by the rental of the 17 campsites. At one time the campground operated from May to mid-October but the requirement of revenues to meet operating costs has reduced the shoulder season and the campground now operates mid-May through Labor Day weekend. The camping revenue has been steady over the last 5 years which mirrors the attendance.

Day use revenue is a combination of the vehicle day use charge and, since 2011, bagged ice sales. Total day use revenue has increased since the onset of bagged ice sales. Ice is sold at the Fourth Lake

DUA and, although revenue is credited to that facility, it is the campers on Alger Island who are purchasing the majority of the ice.

Alger Island Revenue			
Year	Camping	Day use	Total
2014	\$18,846	\$372	\$19,218
2013	\$18,746	\$294	\$19,040
2012	\$18,459	\$462	\$18,921
2011	\$18,157	\$360	\$18,517
2010	\$20,214	\$834	\$21,048
<i>Average</i>	<i>\$18,884</i>	<i>\$464</i>	<i>\$19,348</i>

Fourth Lake Day Use Revenue			
Year	Cash	No Fee	Total
2014	\$1,350	\$174	\$1,524
2013	\$1,384	\$192	\$1,576
2012	\$1,564	\$120	\$1,684
2011	\$1,731	\$150	\$1,881
2010	\$712	\$156	\$868
<i>Average</i>	<i>\$1,348</i>	<i>\$158</i>	<i>\$1,506</i>

2. Carrying Capacity

Alger Island Campground and Fourth Lake DUA facilities should be operated within the physical, biological and social carrying capacity of the site. Operation within these limits will grant continued character and integrity to intensive recreational use at this location and will assure that the public use is consistent with the capacity of the physical, biological and social resources to withstand such use.

a. Physical Design

The following is an analysis of existing design capacities as compared to NYS Department of Health codes and NYS Department of Environmental Conservation design standards. The island campsites offer a semi-primitive type camping experience, with amenities which fall between a wilderness campsite and a typical land based campsite found at most DEC public campgrounds. There is no conventional water or sewage system on the island and therefore several infrastructure items do not meet those design standards. The design capacity for Alger Island campsites is 102, day use capacity on Alger Island is 36 and day use at Fourth Lake DUA is 102.

III. INVENTORY OF ISSUES AND CONSTRAINTS

Facility Infrastructure Capacity Analysis				
Facility Description	Design Standard *	Calculated Need	Currently Available	Deficiency
Campsites	1,250 sq ft/ site	1,250 sq ft/ site	1,250 sq ft/ site	None
Dumping Station	1 for every 100 sites	1	0	1
Potable water supply	55 gal/ day/ site	935 gal	935 gal	None
(Alger)	5 gal /day/ picnicker	240 gal	240 gal	None
Potable water supply	5 gal /day/ picnicker	570 gal	2,000 gal	None
(Fourth Lake)				
Water spigots	1/10 campsites	2	6	None
(Alger)	1/60 picnickers	1	1	None
Water spigots	1/60 picnickers	2	2	None
(Fourth Lake)				
Lavatories	1 for every 15 campsites	2	0	2
(Alger)	1 for every 60 picnickers	1	0	1
Lavatories	1 for every 60 picnickers	2	0	2
(Fourth Lake)				
Toilets/ Urinals	2 for every 10 sites	4	17	None
(Alger)	2 for every 60 picnickers	1	2	None
Toilets/ Urinals	2 for every 60 picnickers	4	8	None
(Fourth Lake)				
Showers	4 showers per 50 campsites	2	0	2
Utility sinks	Conveniently located	2	0	2

*** DEC design standards meet or exceeds NYS Health Department codes**

b. Biological Carrying Capacity

There is little evidence suggesting that current types and levels of recreational use are having a negative impact on soils, vegetation, or wildlife. July and August are the heaviest months for use of this facility.

During winter, this campground is closed for camping. Vehicular traffic occurs on improved surfaces which also helps limit compaction, rutting, and erosion.

Years of visitor use and weather damage has impacted some camping sites and these sites will be rehabilitated as necessary. Shoreline erosion caused primarily by wave action, seasonal fluctuations in lake levels and visitor impacts have caused some paths connecting sites to the lake to become eroded. These areas will be hardened as needed. Stone filled wood cribbing installed to limit shoreline erosion has deteriorated over time and will be rehabilitated. While hazardous trees are removed on a regular basis, (in accordance with established policy), natural regeneration, replanting, and growth of residual trees compensates for any losses. Some loss of screening of sites from the lake occurs and will be addressed by new plantings utilizing native species.

c. Social Carrying Capacity

Annual camper surveys have been conducted since 1996. Campers have been asked to rate their camping experience on a scale from unacceptable to excellent. At current attendance levels, this campground is operating within an acceptable social carrying capacity based on the expectations of our visitors.

Additional impacts associated with planned campground objectives and actions are identified and discussed in the Generic Unit Management Plan Volume I. The following table summarizes survey statistics over the past five years.

Alger Island Camper Survey		
Year	Number of Respondents	Good or Excellent Rating
2014	46	98%
2013	49	96%
2012	12	100%
2011	12	92%
2010	93	97%

F. Adjacent Lands

Adjacent shoreline to Alger Island, with the exception of state-owned Fourth Lake DUA, is private land classified as moderate intensity. The famous 16-mile Fulton Chain is a heavily traveled water route. It is also the starting portion of the longer Adirondack Canoe route which extends over 90 miles from Old Forge to Saranac Lake. Many paddlers traveling this route will make Alger Island the stopping point for their first night.

This campground and day-use area has a favorable economic effect on small businesses in the Old Forge area. Although slight, campers, day-users, and employees at the campground purchase vehicle fuel, food, firewood, sporting equipment, and other items from nearby markets. The campground promotes local attractions for visitors who want to expand their activities during or beyond their stay at the campground.

G. Invasive Species

The negative impacts of invasive species on natural forests, terrestrial and aquatic communities are well documented. Colonization and unrestrained growth of invasive species cause the loss of biodiversity, interruption of normal hydrology, suppression of native vegetation, and significant aesthetic, human safety and economic impacts. Terrestrial and aquatic invasive species have been identified at increasing rates of colonization along roadsides, in campgrounds, and in water bodies of the Forest Preserve. Some of these species have the potential to colonize backcountry lands, lakes and ponds and degrade natural resources of the Forest Preserve.

The threat of invasive species at Alger Island Campground and Fourth Lake DUA is of concern to the Department both for its destructive effect on our environment and its associated financial drain on revenue and resources. Although no invasive species were detected during a 2008 field survey, it is our goal, in collaboration with other agencies and interested groups, to work to establish an active invasive species management program to help identify, contain, and possibly eradicate these species if any become established on the unit.

New York's forests are under attack from numerous invasive exotic insect pests. It is well documented that by transporting firewood, you could be spreading diseases and invasive species. A regulation is in effect that prohibits the import of firewood into New York unless it has been heat treated

to kill pests. The regulation also limits the transportation of untreated firewood to less than 50 miles from its source. Quarantines exist which further restrict firewood transportation.

H. ADA Accessibility Guidelines

Consistent with the Americans with Disabilities Act, the Department incorporates accessibility into the planning, construction and alteration of recreational facilities and assets supporting them. This UMP contains an accessibility assessment within the inventory of the facilities and programs offered. Current ADA construction standards or guidelines will be utilized in the design of all new projects and will be implemented unless structurally impracticable due to terrain. Any new facilities, assets and accessibility improvements to existing facilities in this UMP are identified in the section containing proposed management actions. Currently there are no accessible features at this facility.

I. Unique Ecosystems

No significant unique ecosystems or historic resources have been identified or are known to exist at this location. See wildlife and fisheries sections for unique species located in or around the campground.

J. General Operation

Alger Island Campground and Fourth Lake DUA are used by visitors during the summer season (mid-May through Labor Day) for camping, swimming, boating, fishing and picnicking.

The rest of the year, the Fourth lake DUA and Alger Island are closed to the public and are not staffed by campground employees. Both facilities are visited by many boaters in the spring and fall and by snowmobilers in the winter. The level of unauthorized off season use has not been studied and has not been an issue in terms of impacts on the facility. The continued maintenance and upkeep of this facility helps ensure safe operation of the campground for both visitors and employees use. A well maintained facility promotes an increased interest in camper's use of this campground and its amenities for continued recreational use. Day-to-day operations of this campground are guided by policy set forth in the DEC Campground Guidance Manual. The subject index of the Handbook is referenced in Volume III, Appendix D, of the 1990 GUMP/EIS.

IV. PROPOSED MANAGEMENT ACTIONS

The following management actions are proposed for the ensuing five (5) year period. As a general practice and as required, all work to be performed relative to accomplishing an objective shall include permitting, i.e. wetlands; erosion control will be employed where needed, i.e. silt screen; environmental effects will be minimized on adjacent areas; approval for tree cutting necessary to an objective will be tallied and approval secured; and construction areas will be reforested or reseeded with suitable native species. All new features constructed for public access will have provisions for access for people with disabilities and use materials and colors in keeping with Forest Preserve campgrounds and guidelines provided in the GUMP/EIS and APSLMP. In addition, where appropriate, design, construction and non-ordinary maintenance activities will be carried out in consultation with Adirondack Park Agency (APA) staff.

Finally, it is important to understand that the sequential completion of most of the objectives described in this plan depend on the availability of funding. Capital appropriations are often insufficient to complete all the objectives identified in the sequence listed within a five year period.

PROPOSED MANAGEMENT ACTION			
	MANAGEMENT ACTION	YEAR	EST COST
A.	Replace 2 visitor docks at Fourth Lake DUA	3	\$6,000
B.	Upgrade access road and parking lot at Fourth Lake DUA	3	\$500,000
C.	Correct land classification error for Fourth Lake DUA	1	\$0
D.	Repair 500' wood and stone cribbing on Alger Island	4	\$300,000
E.	Address waste management on Alger Island	1-5	Unknown
F.	Repair 2 docks on east end of Alger Island	1	\$30,000
G.	Campsite improvements on Alger Island	1-5	\$20,000
H.	Alger Island Caretaker's & Assistant's Cabins Future Use	N/A	Unknown

A. Replace 2 visitor docks at Fourth Lake DUA

The two smaller visitor docks are in poor shape and inadequate to accommodate the users of this facility. Two accessible replacement docks 25' x 8' are being proposed that will better accommodate boats of all sizes and offer a safer and steadier platform for loading gear and persons from dock to boats. Unforeseen replacement of additional docks will not exceed 8' in width.

B. Upgrade access road and parking lot at Fourth Lake DUA

The current access road and parking lot is crushed stone and requires maintenance each year to mitigate potholes and drainage issues. In dry periods, traffic will create a dust issue for visitors using the picnic facilities. This proposed action will pave the 0.2 miles of entrance road and existing parking area that can accommodate up to 25 cars and trailers. The parking area will be striped to better direct visitors where to park. Construction will include drainage improvements but will utilize the existing drainage patterns.

C. Correct land classification error for Fourth Lake DUA

It has long been known that the Fourth Lake DUA is missing on the APSLMP list of Intensive Use areas and is shown as a detached piece of Fulton Chain wild forest on the APA land classification map. The lands managed as the Fourth Lake DUA were acquired by the Department on March 1, 1961. The purpose of this acquisition was to provide access to the campsite lean-tos that were constructed on Alger Island during the early 1960's. The map for this acquisition was prepared in February 1961. The map indicates several improvements that existed on the property at the time the Department acquired the property. Several of these outbuildings were repaired or replaced to permit the Department to manage the public's use of this area, for which the property was acquired. There has been no time in the history of state ownership where buildings and other concentrated public use and administrative infrastructure did not exist on this parcel of land. It is therefore the intent of this management objective to correct the error that the land was mislabeled as Wild Forest at the time of the creation of the state land master plan map and change its classification to Intensive Use.

D. Repair wood cribbing on Alger Island

The average lake level on Fourth Lake varies from 1,703' elevation in February and March to 1,707' elevation from May to September. Natural and boat wake wave action of the raised and

seasonally fluctuating lake levels results in erosive forces on the shoreline areas around the Fulton Chain. Certain sections of shoreline are more subject to these impacts than others.

There is approximately 1,400' of stone filled wood cribbing at various locations surrounding Alger Island to mitigate the erosion issues. Much of this cribbing is in a deteriorated state leaving the shoreline unprotected and subject to further damage. This management action proposes to repair approximately 500' of deteriorated cribbing. Construction material and methods will be a combination of cribbing similar to the existing natural stone and timbers as well as soft engineering methods such as plantings, submerged logs and other techniques that will be determined during the design phase. Grading and planting of vegetation will be compatible with the natural shoreline and utilize native species. When specific sections of shoreline are selected for rehabilitation staff will develop site specific recommendation in consultation with the APA.

E. Address waste management on Alger Island

Currently there are 20 pit privies located in the vicinity of each campsite and at the day use area. The periodic relocation of these privies is difficult due to the rocky terrain and the 150' set back requirement from the shoreline. Seventeen of the privies are within the 150' set back requirement. This management action proposes to address the waste management issues on Alger Island. As of the writing of this plan the Department is exploring two options to address this issue:

Option 1: Construct two composting toilets which will service campsites #4 - #13 and the island day use area.

Each unit will contain two storage tanks and may utilize solar power to provide minimal lighting and to assist in the composting process. The units will be located to minimize soil disturbance and the need for tree removal. It is estimated that fifty (50) trees will need to be removed during construction. This option will result in the removal of eleven (11) pit privies based on current configuration and capacity.

Option 2: Replace non-conforming pit privies with self-contained units.

Each unit will contain a single toilet with holding tank and will be periodically pumped. The Department will utilize a small work barge, pumping equipment and holding tank to service units on

Alger Island. In addition, there will be a holding tank located on the Fourth Lake DUA for temporary storage of effluent until it can be disposed of at an appropriate facility. Unit placement will be established to maintain adequate screening while at the same time provide for efficient maintenance.

Development of either option, or a combination of the two, will be dependent upon technology, costs and staffing levels at the time of implementation and will be initiated in coordination with the APA to ensure compliance with all applicable regulations. In addition, at the time of implementation accessible design will be incorporated to the greatest extent possible.

F. Repair 2 docks on east end of Alger Island

There are two floating docks at the east end of the island that serves as a place to tie up boats and access the day use area. There is a third dock that is fixed to cribbing that serves as a place to tie up as well as a shoreline erosion control structure. These docks improve the safety of visitors entering the facility and reduce shoreline erosion that would occur if they were required to pull the boat up on shore and climb the bank to the picnic facility.

This management action proposes to replace one of the floating docks that has deteriorated due to age and to repair the fixed dock that has deteriorated from wave action and age. The replacement dock will be 8' wide or less and a sufficient length to allow for proper portage of day users under the specific site conditions.

G. Campsite improvements on Alger Island

As previously noted in section III E, public use over time has resulted in localized impacts including soil erosion, loss of ground vegetation and a reduction in screening from the lake. This management action proposes to stabilize and repair erosion issues on sites #1,4,5,6,7,9,10. Paths from the lake to campsites will be hardened on sites #8,10,11,12,14,15. New vegetation will be planted on sites #1,2,3,5,6,7,9,10 and will utilize native species. If site location and environmental conditions allow some sites will be improved to meet accessibility standards.

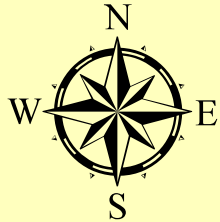
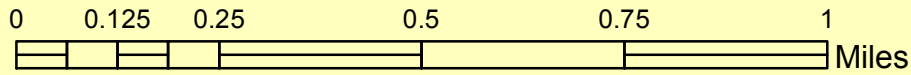
Screening of sites from the lake shore could be further improved by the relocation of lean-tos back from the lake. As Lean-tos need major repair or replacement, they will be relocated to conform to the APSLMP siting requirements.

H. Alger Island Caretaker’s & Assistant’s Cabins future use

Currently both the caretaker’s cabin and assistance caretaker’s cabin on Alger Island are not in use. If in the future either structure is removed the site may be converted into an additional campsite. If this proposal is pursued it will be done in accordance with all APSLMP and GUMP/EIS guidelines.

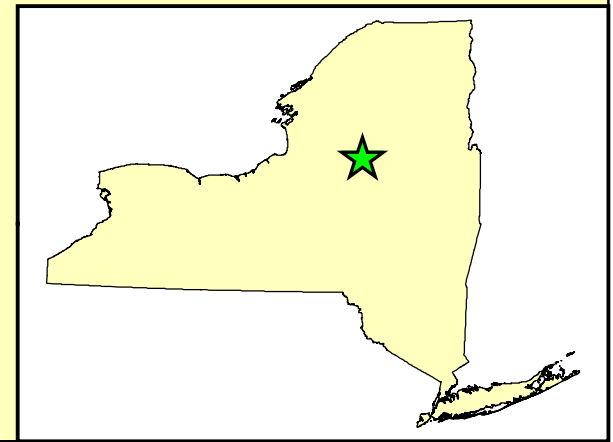
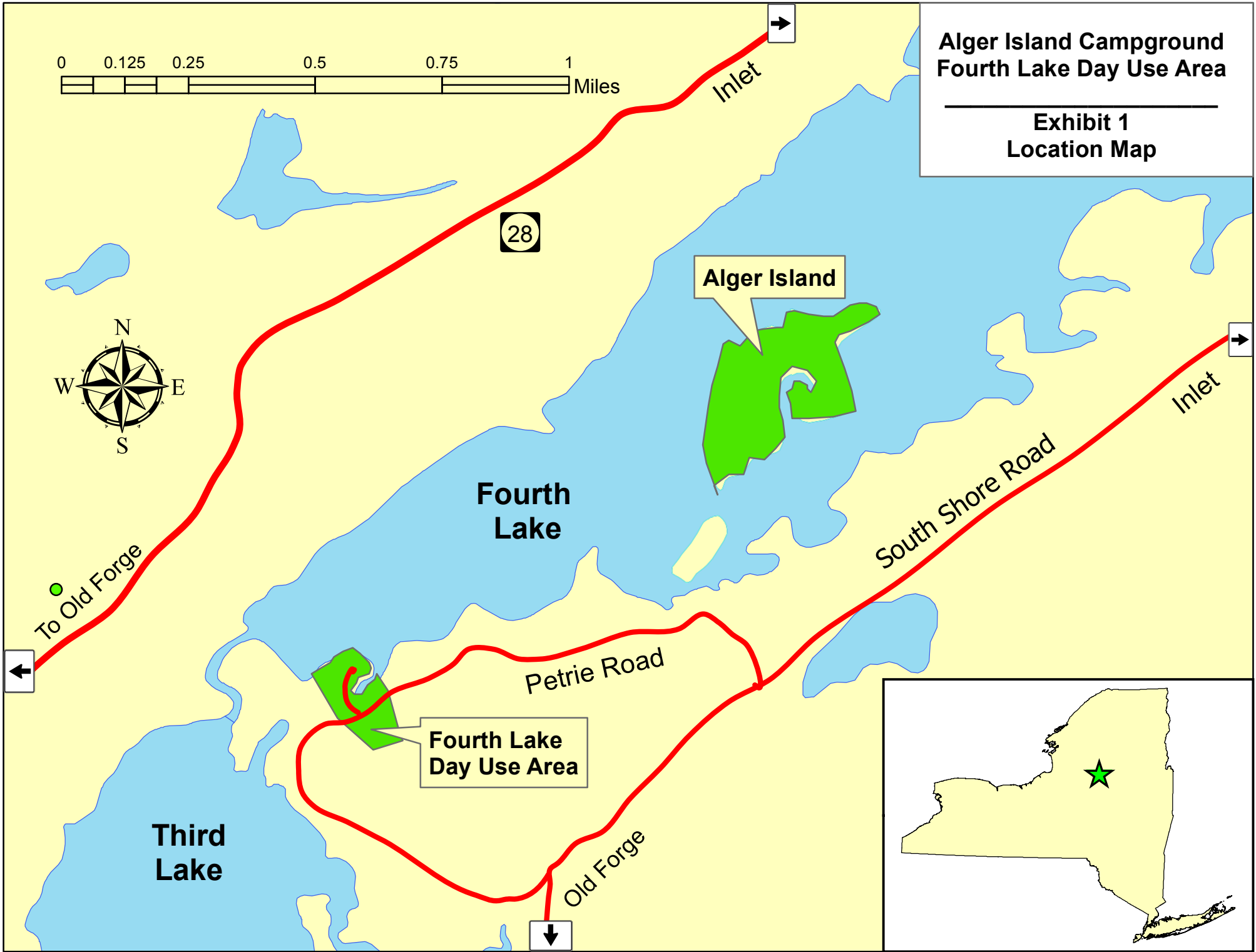
V. EXHIBIT INDEX

Exhibit Index
Exhibit #1 – Alger Island 4 th Lake Day Use – Location Map
Exhibit #2 - Alger Island 4 th Lake Day Use – Contour Map
Exhibit #3 - Alger Island 4 th Lake Day Use – Alger Facilities Map
Exhibit #4 – Alger Island 4 th Lake Day Use – 4 th Lake Facilities Map
Exhibit #5 – Alger Island 4 th Lake Day Use – 4 th Lake Water System Map
Exhibit #6 – Alger Island 4 th Lake Day Use – 4 th Lake Sewage System Map
Exhibit #7 – Alger Island 4 th Lake Day Use – 4 th Lake Electric System Map
Exhibit #8 – Alger Island 4 th Lake Day Use – Orthoimagery Map
Exhibit #9 – Alger Island 4 th Lake Day Use – Camper Demographic Map
Exhibit #10 – Alger Island 4 th Lake Day Use - Alger Management Actions
Exhibit #11 – Alger Island 4 th Lake Day Use – 4 th Lake Management Actions
Exhibit #12 – Alger Island 4 th Lake Day Use – Campground Photos
Exhibit #13 – Public comments and Department response.



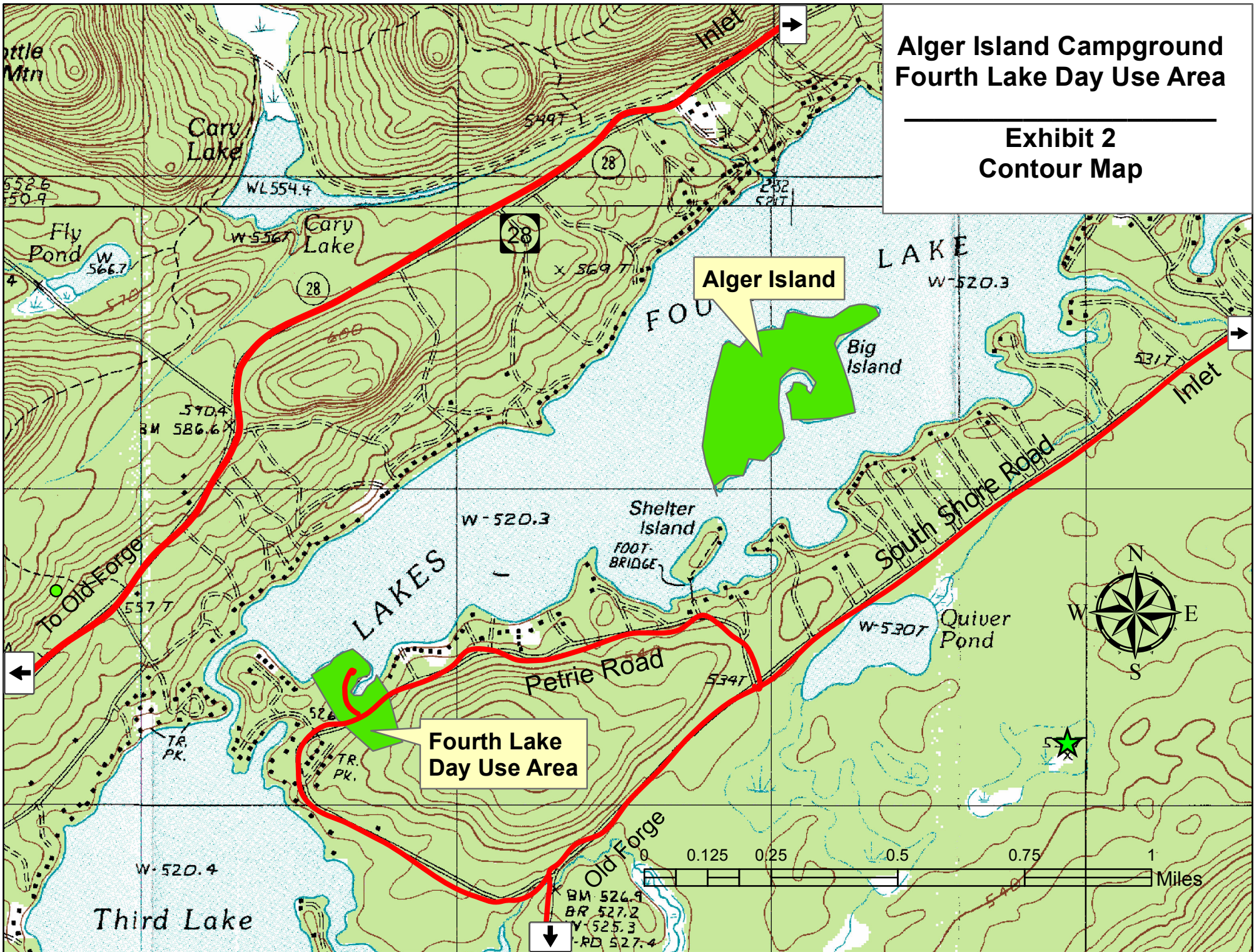
**Alger Island Campground
Fourth Lake Day Use Area**

**Exhibit 1
Location Map**



Alger Island Campground Fourth Lake Day Use Area

Exhibit 2 Contour Map



Alger Island Campground & Fourth Lake
Day Use Area UMP

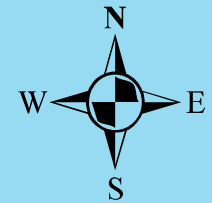
Exhibit # 3
Alger Island Facilities Map

Fourth
Lake

ALGER

ISLAND

Caretaker's cabin



0 150 300 600 Feet

Key

- 6 Person Leanto
- Tent Site
- Pit Privy
- Picnic Area
- Administrative Buildings
- Water Spigot
- Dock
- Shoreline Protection

Fourth Lake

Public Docks

Alger Island Campground & Fourth Lake Day Use Area UMP

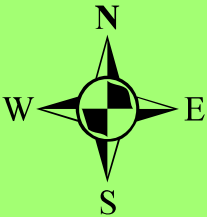
Exhibit # 4
Fourth Lake Facilities Map

Pumphouse

Administrative Docks

Garage

Parking Area



0 50 100 200 Feet

KEY

- Comfort Station
- Caretaker Cabin
- Building
- Picnic Area
- Car Top Launch
- Shore Protection



Alger Island Campground & Fourth Lake Day Use Area UMP

Exhibit # 5
Fourth Lake Water System



Fourth Lake

Public Docks

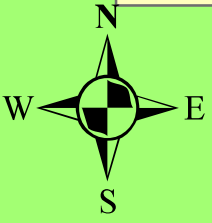
Well

Pumphouse

Garage


Administrative Docks

Parking Area



0 50 100 200 Feet

KEY

-  Comfort Station
-  Caretaker Cabin
-  Building
-  Picnic Area
-  Water Spicket
-  Water Line

Alger Island Campground & Fourth Lake Day Use Area UMP

Exhibit # 6
Fourth Lake Sewer System

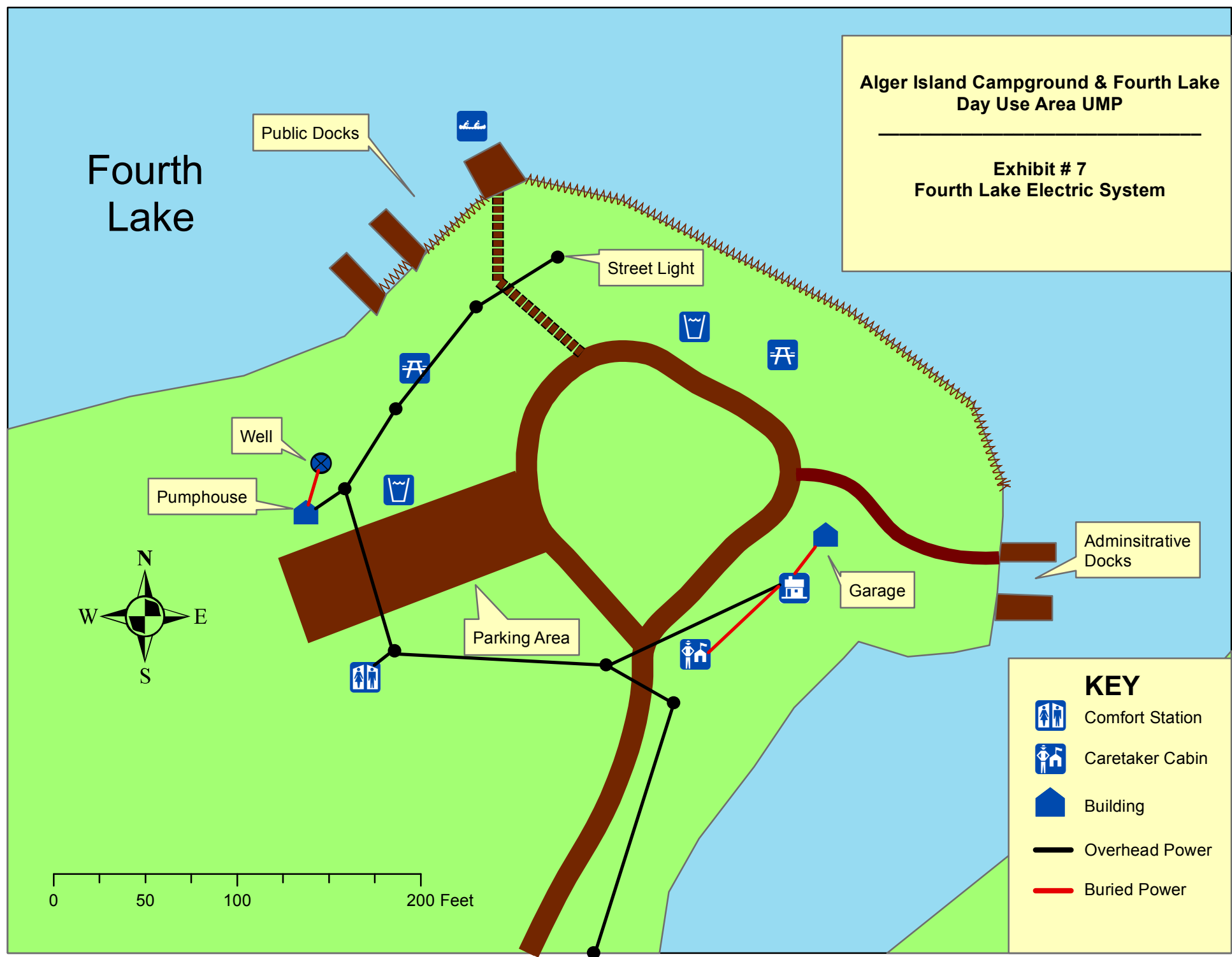


KEY

-  Comfort Station
-  Caretaker Cabin
-  Building
-  Picnic Area
-  Water Spicket

Alger Island Campground & Fourth Lake Day Use Area UMP

Exhibit # 7
Fourth Lake Electric System



Fourth Lake

Public Docks

Street Light

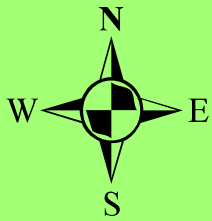
Well

Pumphouse

Parking Area

Garage

Adminisitrative Docks

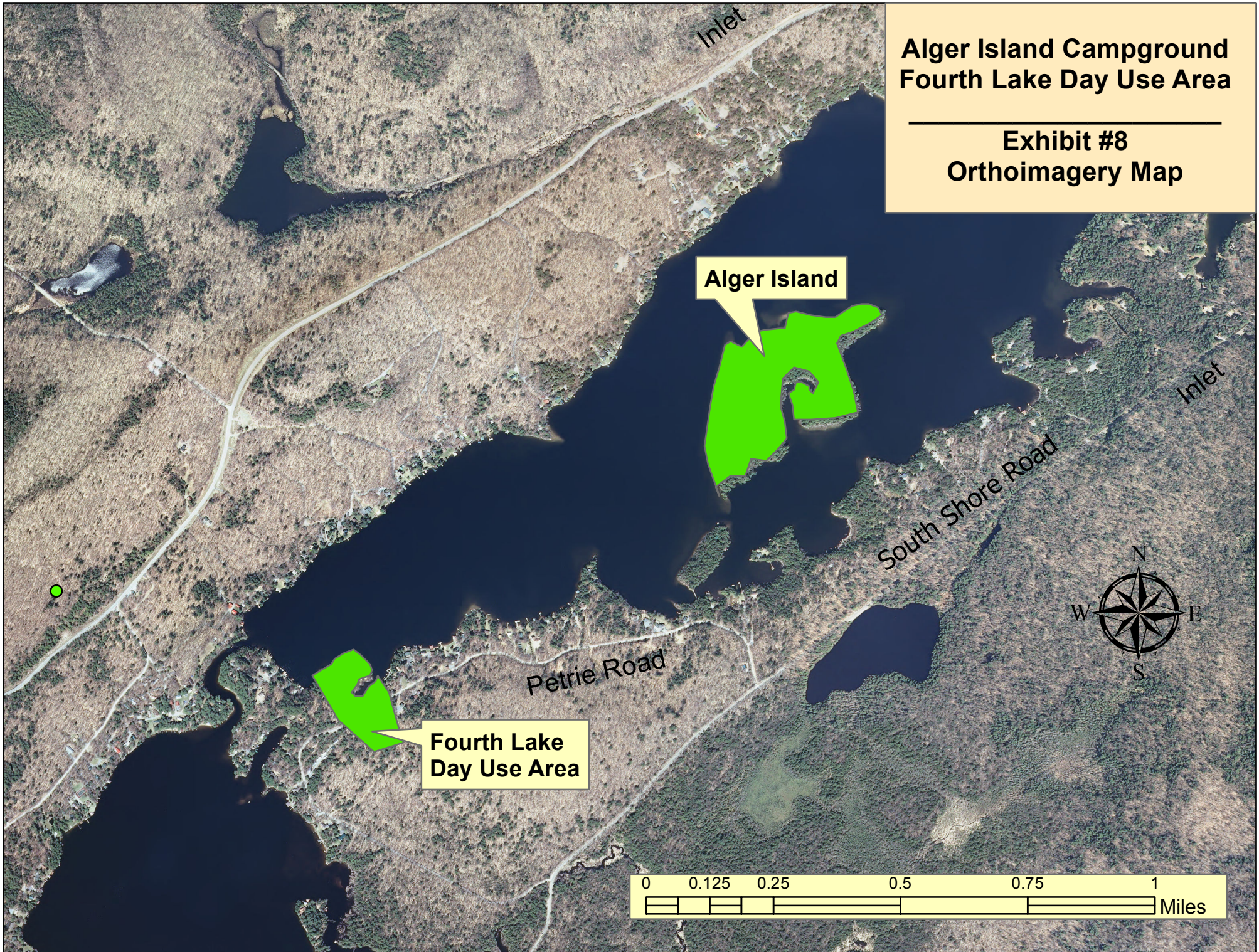


0 50 100 200 Feet

- KEY**
- Comfort Station
 - Caretaker Cabin
 - Building
 - Overhead Power
 - Buried Power

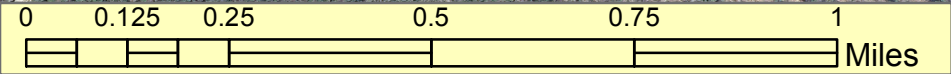
**Alger Island Campground
Fourth Lake Day Use Area**

**Exhibit #8
Orthoimagery Map**



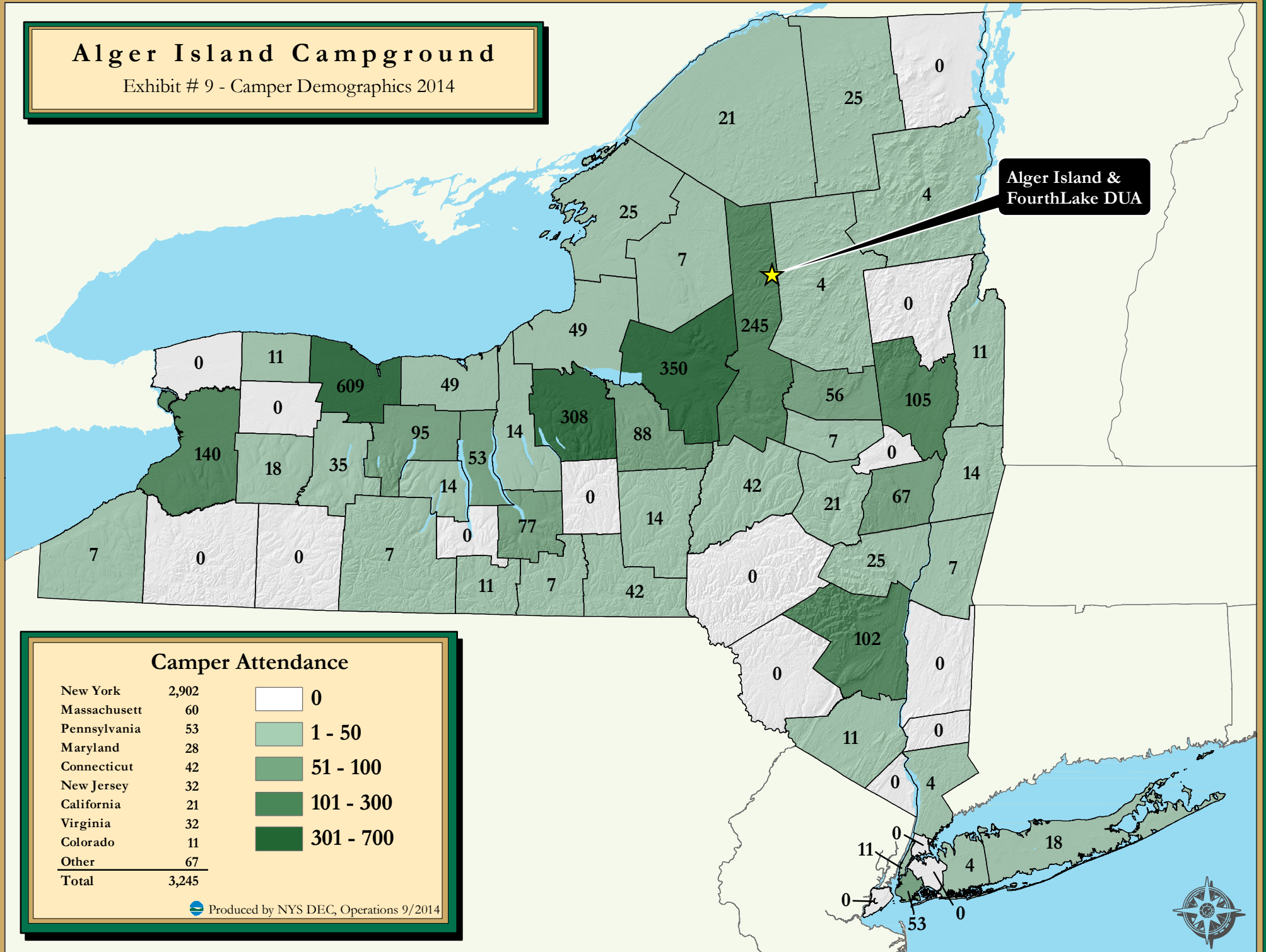
Alger Island

**Fourth Lake
Day Use Area**



Alger Island Campground

Exhibit # 9 - Camper Demographics 2014



Alger Island & Fourth Lake DUA

Camper Attendance

New York	2,902	0
Massachusetts	60	
Pennsylvania	53	1 - 50
Maryland	28	
Connecticut	42	51 - 100
New Jersey	32	
California	21	101 - 300
Virginia	32	
Colorado	11	301 - 700
Other	67	
Total	3,245	

Produced by NYS DEC, Operations 9/2014



Alger Island Campground & Fourth Lake
Day Use Area UMP

Exhibit # 10
Alger island Management Actions Map

Fourth
Lake

Campsite Improvements

Address Waste Management

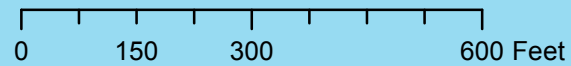
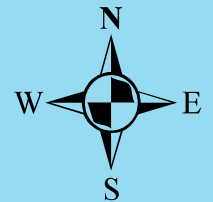
Repair/replace 2 Docks

Repair Wood Cribbing

Caretaker's cabin

ISLAND

ALGER



Key

- 6 Person Leanto
- Tent Site
- Pit Privy
- Picnic Area
- Administrative Buildings
- Water Spigot
- Dock
- Shoreline Protection

Alger Island Campground & Fourth Lake
Day Use Area UMP

Exhibit # 11
4th Lake Management Actions Map

Fourth
Lake

Replace 2 Visitor Docks

Public Docks

Pumphouse

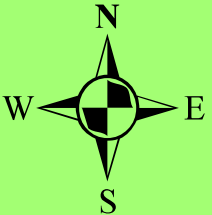
Garage

Adminsitrative
Docks

Parking Area

Correct Land Classification

Pave Roads and Parking Lot



0 50 100 200 Feet

- KEY**
- Comfort Station
 - Caretaker Cabin
 - Building
 - Picnic Area
 - Car Top Launch
 - Shore Protection



Alger Island 4th Lake Day Use

Unit Management Plan

Exhibit # 12

Facility Photos (Page 1)



Ticket Booth



Day Use Area Comfort Station



Caretaker's Cabin



Day Use Area Administrative Docks



Garage



Pumphouse

Alger Island 4th Lake Day Use

Unit Management Plan

Exhibit # 12

Facility Photos (Page 2)



Day Use Area Public Docks



Alger Island Caretaker's Cabin



Day Use Area Cartop Launch



Alger Island Storage Building



Shoreline Protection at Day Use Area



Alger Island Boat House

**Alger island 4th Lake Day Area
Unit Management Plan Exhibit
12
Facility Photos (Page 3)**



Alger Island Assistants Cabin



Alger Island Day Use Dock



Alger Island Day Use Area



Alger Island Water Pump



Alger Island Day Use Area



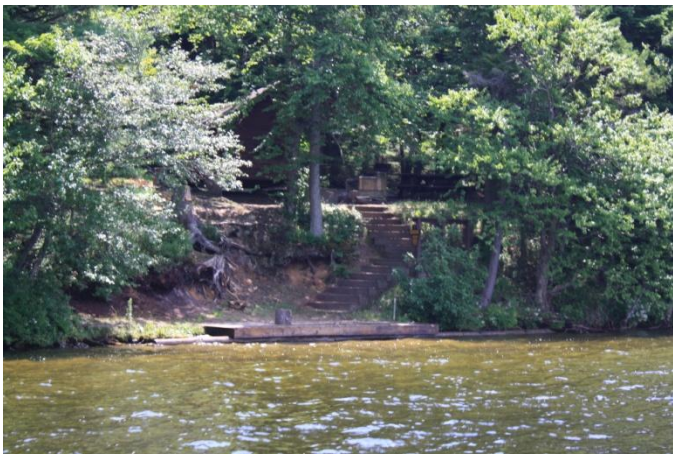
Alger Island Shoreline Structure

Alger Island 4th Lake Day Use Area

Unit Management Plan

Exhibit # 12

Facility Photos (Page 4)



Alger Island Site #1



Alger Island Site #4



Alger Island Site #2



Alger Island Site #5



Alger Island Site #3



Alger Island Site #6

**Alger Island 4th Lake Day Use Area
Unit Management Plan**

Exhibit # 12
Facility Photos (Page5)



Alger Island Site #7



Alger Island Site #10



Alger Island Site #8



Alger Island Site #11



Alger Island Site #9



Alger Island Site #12

Alger Island 4th Lake Day Use Area

Unit Management Plan

Exhibit # 12

Facility Photos (Page 6)



Alger Island Site #13



Alger Island Site #15



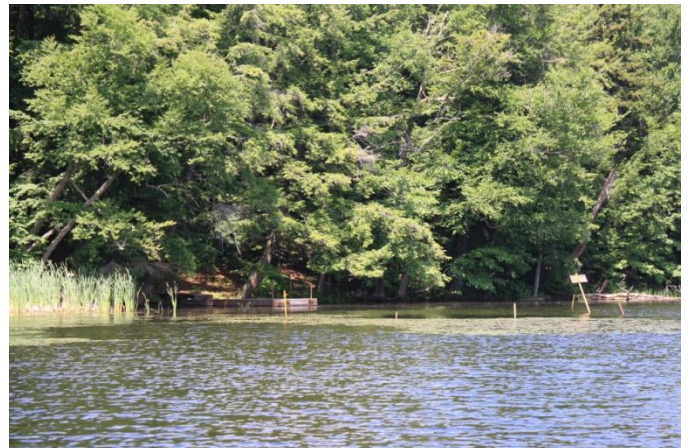
Alger Island Site #13



Alger Island Site #15



Alger Island Site #14



Alger Island Site #16 & 17

EXHIBIT # - 13

Public Comment Response

Public Comments are grouped by category and summarized below.

Alger Island waste management

Comment- Favors self-contained privy units over centralized bathroom facilities on Alger Island for ease of maintenance, upkeep and camper use.

Response – Self-contained privy units are one of the two options being explored to address waste management on Alger Island. The benefits of a self-contained unit, such as cost, speed of deployment and maintenance, have been realized at other state owned facilities and are factors in their future utilization on Alger Island.

Fourth Lake Day Use Area Boat Launch

Comment- Would like to see plans for a trailer boat launch at the Fourth Lake Day Use Area (DUA).

Response – At this point in time the Department does not have plans to construct a trailered boat launch at the Fourth Lake DUA. The current Fourth Lake DUA waterway access site is used predominantly for access to the campsites on Alger Island and is not typically utilized for general public access to Fourth Lake. Adequate parking for vehicles & trailers, turning radiuses, ingress & egress, shore line depths, and proximity of administrative infrastructure are some of the factors that would prove problematic if a trailer boat launch were to be considered in the Day Use Area. The public is encouraged to use the free public boat launch in Inlet if they wish to launch trailered boats. For those individuals with boats who are camping on Alger Island there is a very small area available on a first come first serve basis at the Fourth Lake DUA for trailers to be parked, separately from the tow vehicle.

Fourth Lake Boat Launch (Inlet)

Comment- Concern over the function, layout and maintenance of the Departments trailered boat launch on Fourth Lake in Inlet.

Response – The Fourth Lake boat launch in Inlet is outside the scope of this Unit Management Plan. The concerns voiced will be forwarded to the Bureau of Fisheries who administer the Fourth Lake boat launch.